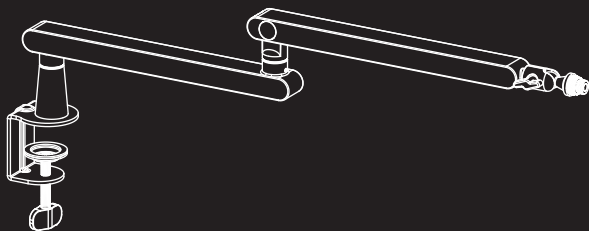




SENSIO

SA-30 LP BOOM ARM



Instruction manual

Other languages

This instruction manual is available online in multiple languages (German, Dutch, French, Spanish & Italian).

Please visit gosensic.com/sa-30lp-instruction-manual.

Maintenance

Cleaning

Only clean the boom arm with a slightly damp, lint-free cloth and do not use aggressive cleaning agents.

Repair

Do not attempt to repair or disassemble the product yourself. In order to prevent hazards, always contact the seller for repairs.

Disposal

To contribute to a cleaner living environment, this boom arm should not be disposed with other household waste. For proper recycling, please take the boom arm to a designated collection point.



Warranty

Sensic offers a 1-year factory warranty on this product. To be eligible for the warranty, the product needs to be returned with the proof of purchase.

For the latest product warranty terms, visit gosensic.com/warranty.

Free warranty extension

For this SA-30 LP boom arm you can claim a free warranty extension from 1 to 2 years. You can claim this by scanning the QR-code below or by visiting the following page: gosensic.com/extended-warranty.



This warranty extension can only be claimed for up to **30 days** after making your purchase

Safety precautions

Please follow the installation instructions from the inlay card or the assembly video before you start the installation. If you have any questions regarding any of the instructions or warnings, please contact the seller for assistance.

CAUTION: Use with products heavier than the rated indicated weights may result in instability, causing possible injury.

- Please closely follow the assembly instructions. Improper installation may result in damage or serious personal injury.
- The boom arm should only be assembled using the original equipment.
- Make sure that the supporting surface will safely support the combined weight of the equipment and all attached hardware and components.
- Do not over tighten the angle lock knobs.
- This product contains small items that could be a choking hazard if swallowed. Keep these items away from children.
- This product is intended for indoor use only. Using this product outdoors could lead to product failure and personal injury.
- The boom arm shouldn't be assembled by people (including children) with reduced physical, sensory or mental capabilities, or lack of experience and knowledge, unless they have been given supervision or instructions concerning use of the boom arm by a person responsible for their safety.
- Do not drop or place the boom arm into water or any other liquids.
- Do not put any excessive pressure on the boom arm.
- Do not force the boom arm into the wrong direction.

© 2023 Sensic. All rights reserved. The Sensic logo is a registered trademark of Sensic in The Netherlands, Belgium and Luxembourg. Furnishing of this guide does not give you a license to any such copyright, trademark and intellectual property right. The Sensic SA-30 LP "product" may differ from pictures whether on packaging or otherwise. Sensic assumes no responsibility for such differences or for any errors that may appear. Information contained herein is subject to chance without notice.

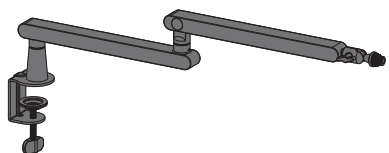


INSTALLATION GUIDE

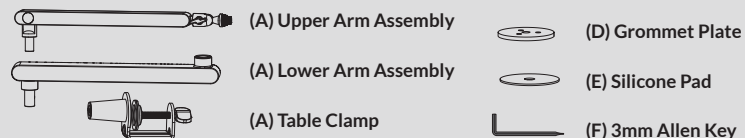
Thank you for purchasing the Sensic SA-30 LP boom arm!

This installation guide will guide you through the assembly process. While the installation is quite simple, we ask that you follow these instructions carefully to make sure everything goes smoothly. Also, please read the **safety precautions** in the included manual as well.

You can also watch our assembly video for a more visual instruction guide by scanning the QR-code below or by visiting: gosensic.com/sa-30lp-instruction-manual.

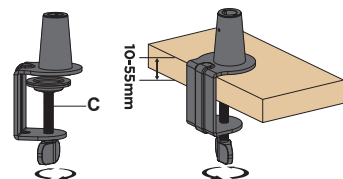


PACKAGE CONTENTS

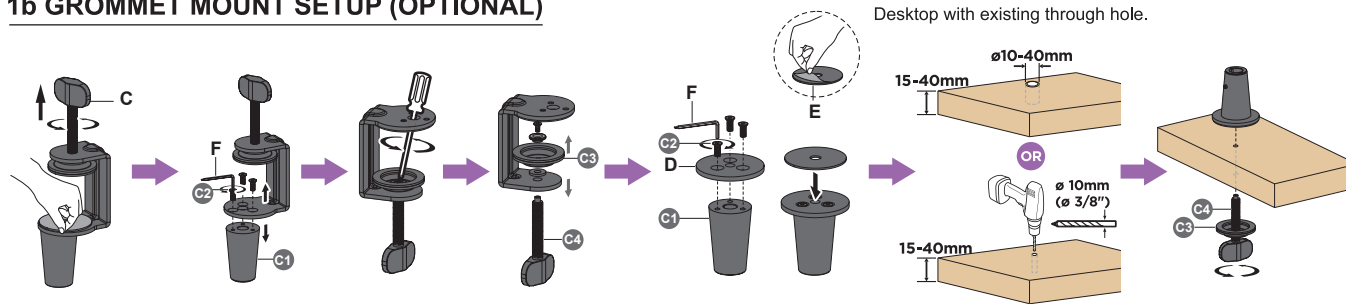


INSTALLATION

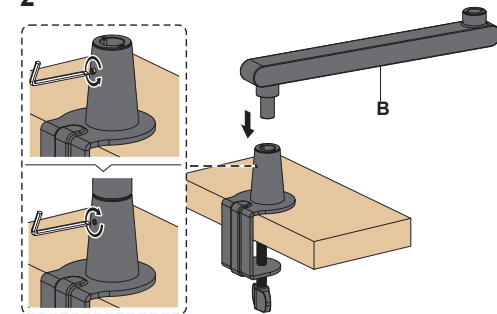
1a TABLE CLAMP SETUP



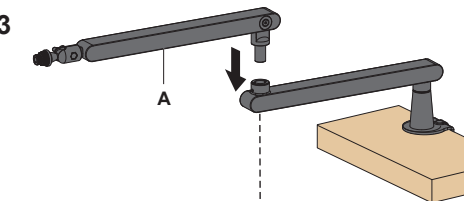
1b GROMMET MOUNT SETUP (OPTIONAL)



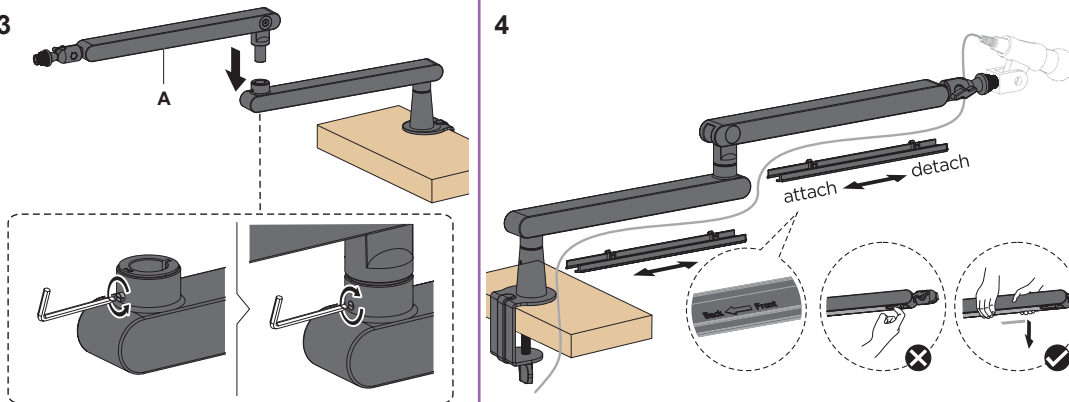
2



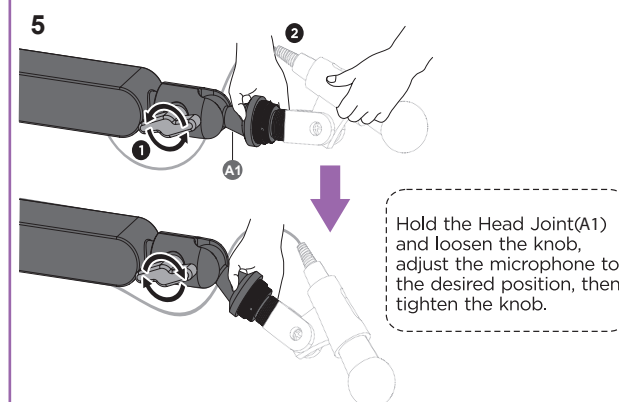
3



4



5



6

